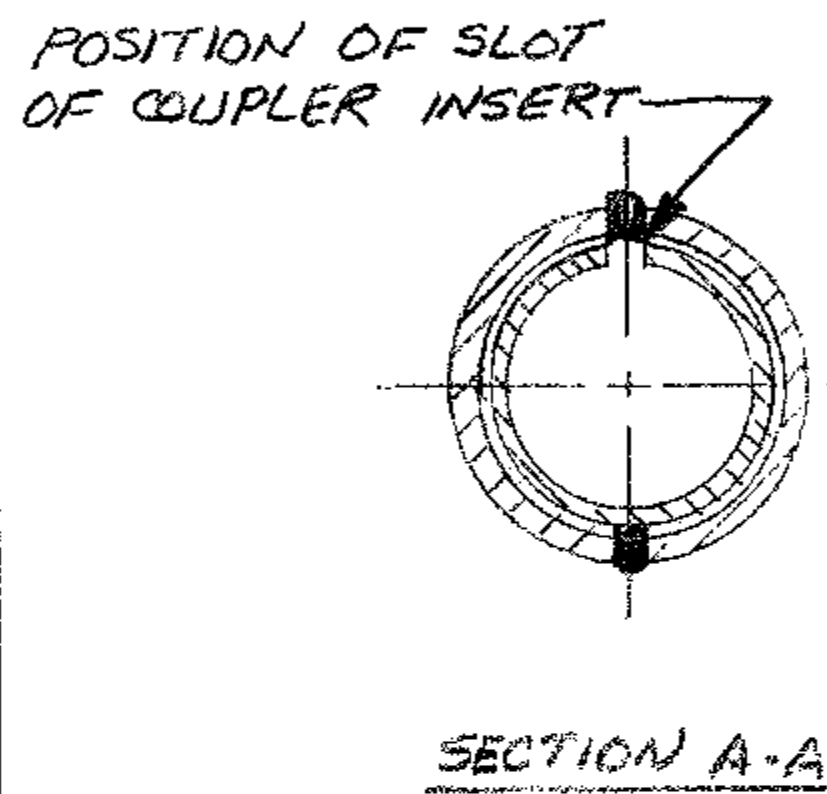
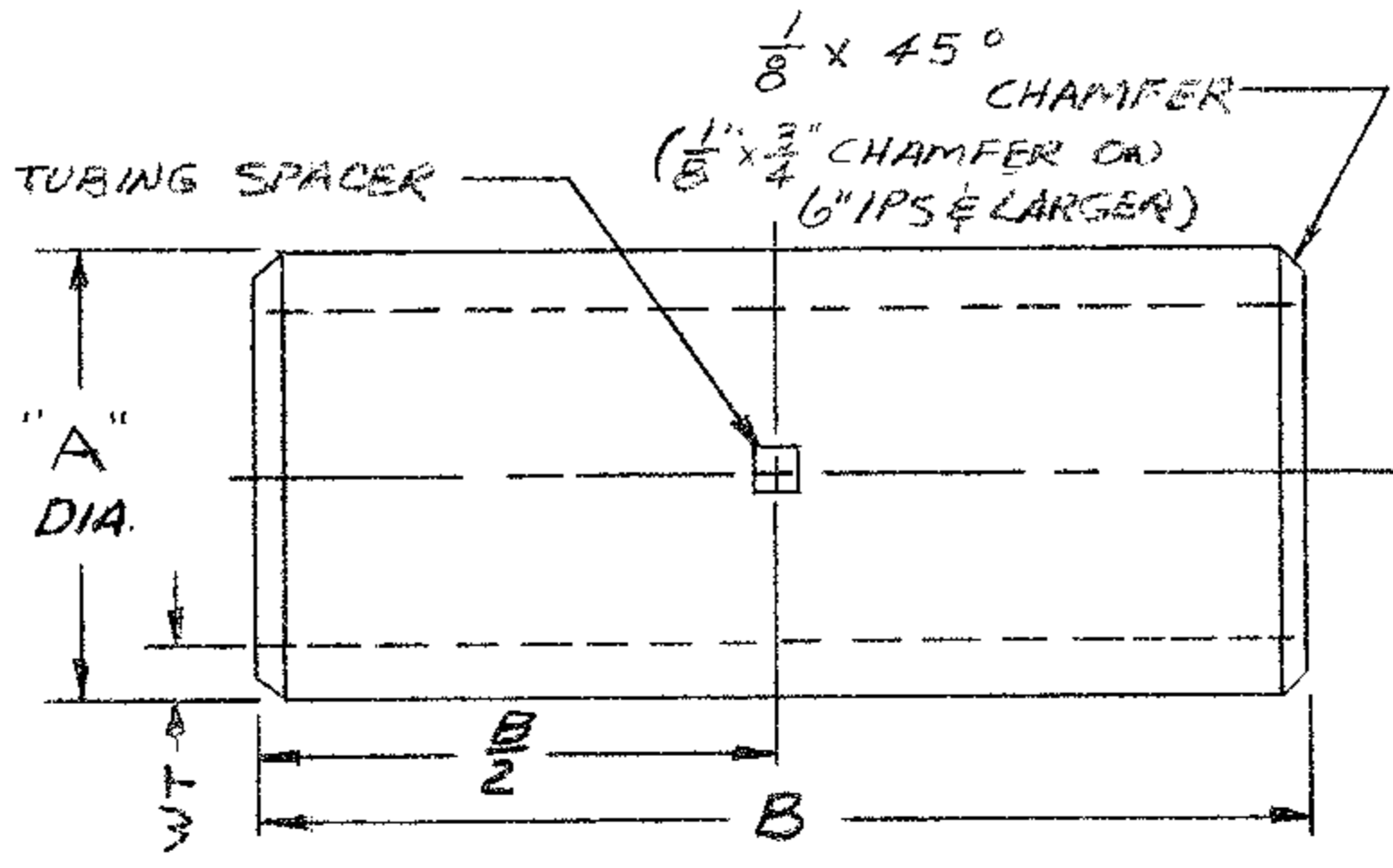
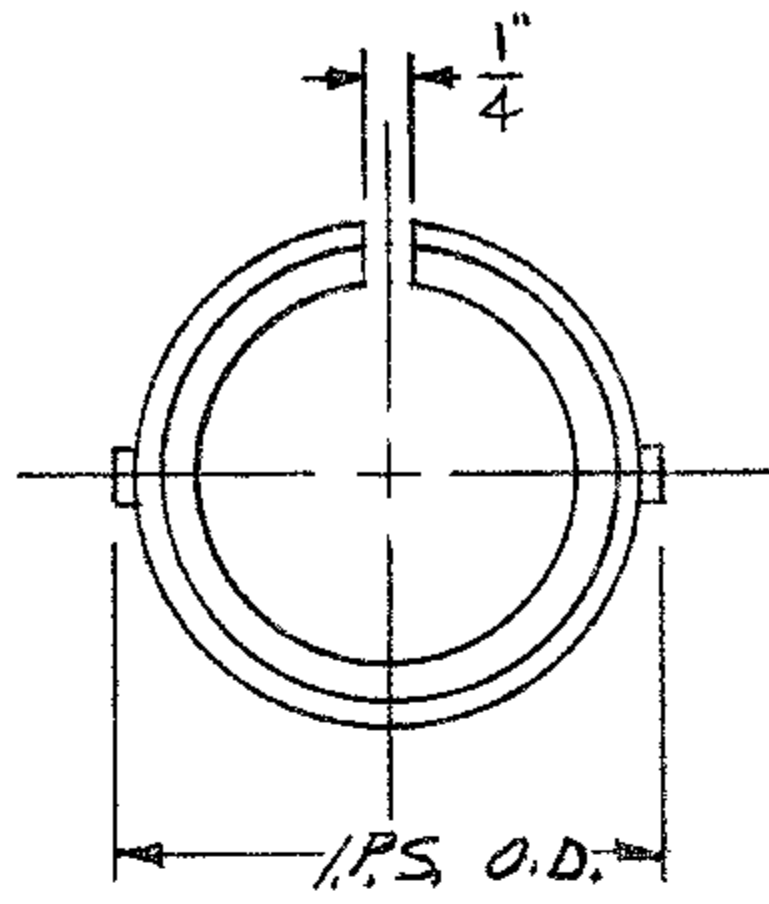
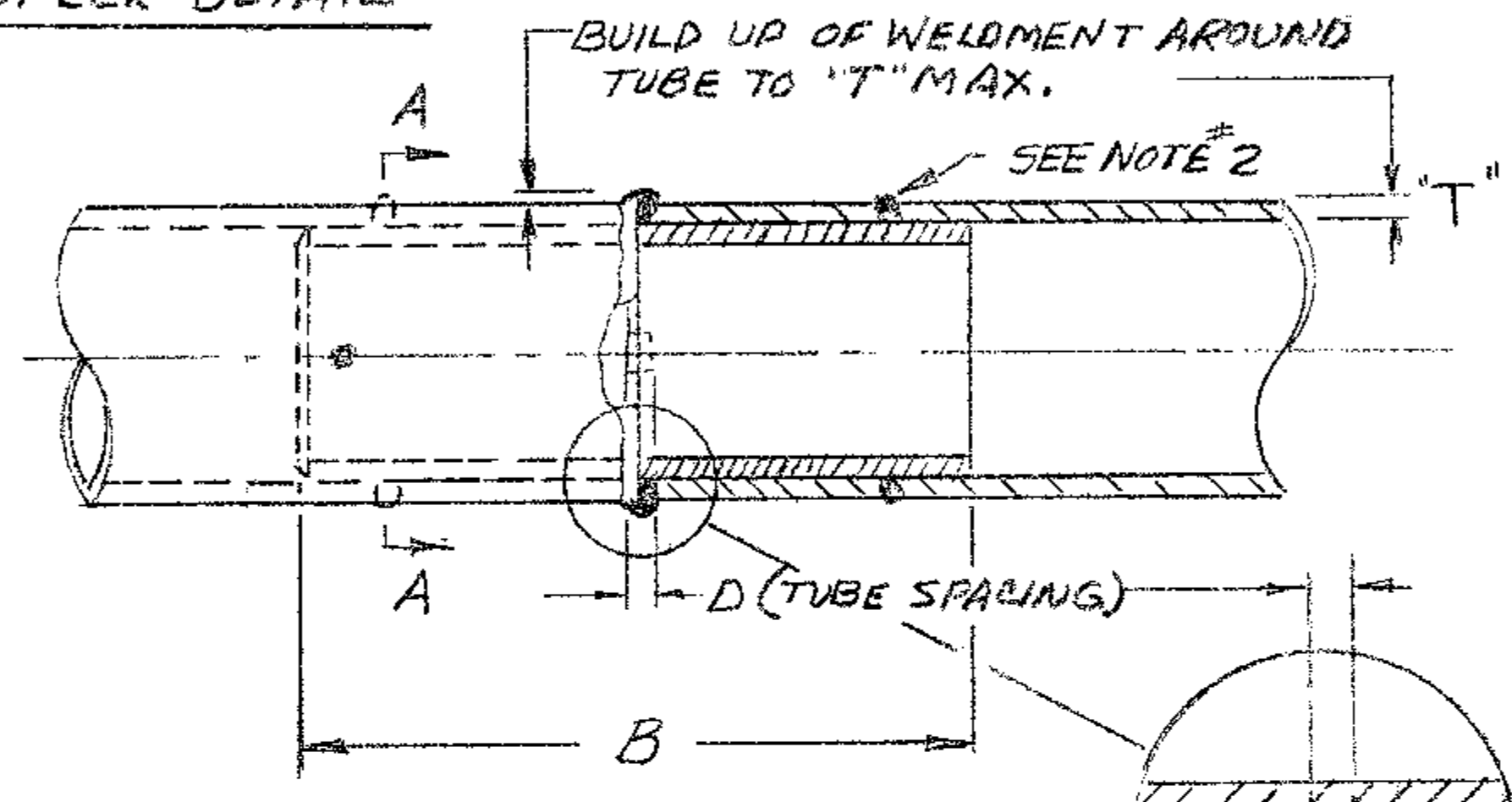


REVISIONS		DESCRIPTION	BY
DATE	NO.		
7-20-79	17	REVISED DIMS FOR CATALOG	MDY
2-23-82	18	3" DIM (WAS 3.48") WAS 2" (COR 3079)	MDY
10-15-09	19	ADDED 6061-T6 TO NOTE 1	WJI

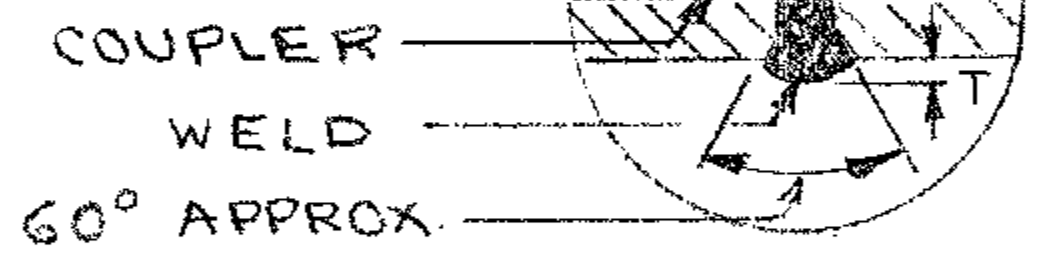
EC 33096



COUPLER DETAIL



ASSEMBLY DETAIL



NOTES:

1. MATERIAL: 6061-T6 OR 356 T6 ALUM. ALLOY
2. PLUG WELDS MAY BE ADDED TO PROVIDE MAXIMUM STIFFNESS TO JOINT
3. FOR DRIVE FIT APPLICATION, 1/4" CAST SLOT MAY BE SPREAD TO SLIT I.D. OF TUBULAR BUS

REVISIONS		DESCRIPTION	BY
DATE	NO.		
9-21-71	14	REDRAWN	DJ
6-24-76	15	REV. WCI-8 O.D. - 1/2	RH
2-28-78	16	ADDED WCI-8 O.D. - 3/8	RH

CATALOG NUMBER	IPS SIZE	DIMENSIONS			WT	INCHES
		A	B	D		
WCI-0606	3/4	25/32	4 1/2	1/8		
WCI-1010	1	1	7 1/2	1/8	11/64	
WCI-1212	1 1/4	1 11/32	7 1/2	1/8	17/64	
WCI-1414	1 1/2	1 9/16	9	1/8	1/4	
WCI-2020	2	2	12	1/4	1/4	
WCI-2424	2 1/2	2 13/32	15	1/4	1/4	
WCI-3030	3	3	18	1/4	1/4	
WCI-3434	3 1/2	3 15/32	18	1/4	19/64	
WCI-4040	4	3 31/32	24	1/4	19/64	
WCI-5050	5	4 31/32	24	1/4	3/8	
WCI-6060	6	6	24	1/4	11/32	

CK-1312

R/14 15/16 17/18 19

DATE 9-10-62  
DWN BY KH CKD BY  
APPROVED JAF  
SCALE

WELDED COUPLER (INTERNAL)  
TUBULAR TYPE  
ER-K-2-8-506

ANDERSON ELECTRIC CORP.  
LEEDS ALABAMA  
CAT. NO. WCI (TAB) DWG. NO. C-4940

